



moland
- a natural choice

FLOORS
- a natural choice

Welcome!

Welcome!

Wood is a natural material, and the main ingredient of life at Moland. What's more, whether we are aware of it or not, it is an essential part of the life of most people.

The floor is the basis of a room's style, atmosphere and overall impression.

For many reasons wooden floors have gained much popularity. Wooden floor is a natural choice in many homes, and for other types of buildings.

When wooden floors are chosen for a home, both heart and mind are involved in the process.

Things such as warmth, atmosphere, scent, well-being, tradition, history, healthy indoor climate, easy care, long lifetime and a whole lot more go into the choice of a wooden floor.

Moland wooden floors offer almost limitless choice and variety. Our product range covers a variety of types, wood species, finishes and also accessories and wood care products.

We hope the following photographs will give you a taste of the exciting trends, attractive, traditional solutions and ways of living with a wooden floor at work and at home.

Enjoy a wealth of inspiration!



www.moland-skive.dk
www.molana-skive.dk



Welcome...
Welcome...
welcome...



Oak Low Gloss Lacquer



Oak Smoked/Brushed Oil

Merbau Oil

Molaloc - Glueless Parquet Floor

Molaloc parquet floors can be laid faster than other such floors.

They do not need any glue whatsoever, making them much faster to lay than traditional parquet floors. Even jointing is performed using a unique tongue and groove locking system, enabling each board to just be quickly slipped into place.

Molaloc floors are available in a range of different wood types and finishes.



Ash White Oil

A ho



use out of the ordinary
A house out of the ordinary
...needs a floor to match



Wide range of options
with wooden floors...

Oak White Oil



Walnut Oil



Oak Oil



Oak White Oil

Molaloc - Glueless Plank Floor

Molaloc plank floor is installed with the unique glueless locking system.

The result is a stylish, elegant and classic appearance for homes, shops and offices.

Plank floors come in a range of wood types and low gloss lacquer or oiled finishes to suit every taste.

The structure of the wood gives each plank its very own identity. No two are alike, which means no two floors are alike.



Maritime lines
Maritime lines

- create effect with marine joints....

- create effect with marine joints....

Ship-deck Flooring

Ship-deck flooring is somewhat very special. It oozes with charm and character, its appearance is exclusive, yet it is very affordable. Many of our flooring types can be combined with a grey or black rubber joint which provides a unique contrasting effect.

Ship-deck flooring is just as easy to lay as our other wood flooring and just as easy to look after on a daily basis.



Oak White Oil



Merbau Oil with ship's deck

rine joint

Timeless design

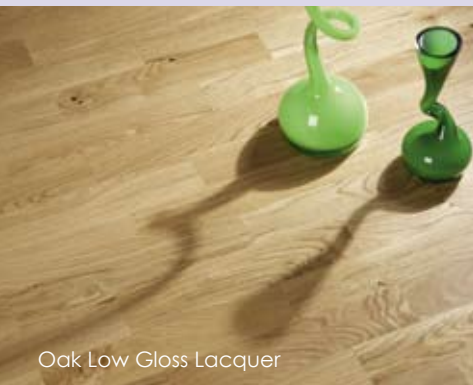
Design is what makes a home interior exciting and individual.

Nobody is alike and we always seek different solutions. Our choice of home interior and thus choice of materials are also affected by the current trends.

With a wooden floor, you have a host of opportunities to change the design and layout of a room. And the rich, natural colours of wood give you enormous flexibility to change your style of interior design.

The range is wide, very wide and in constant development. We carefully follow trends within interior design, and the latest developments within technology and surface treatment.

That's why Moland is - *a natural choice* - the next time you choose a wooden floor.



Oak Low Gloss Lacquer



Merbau Oil



Ash Oil



Floors with style...
Floors with style...
Floors with sty





More than just a floor
- a vital part of the room

Parquet or Plank? It's simply a question of taste

In terms of function, there is no difference between the two types. So you can base your choice on taste, style and temperament. In other words, you should be able to like what you see.

With its 3-strip construction, Parquet floors have an attractive contrast, whereas Plank floors, with their long, wide boards, bring out the wood's structure, emphasising the lines of the room.





Time for a change....
Time for a change....

Oak White Low Gloss Lacquer

In the office



For the office

For the office

...and the home

...and the home

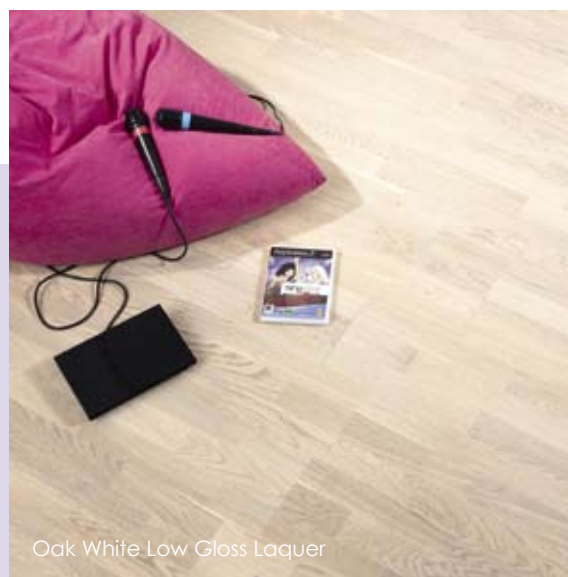
Wooden floors can be used anywhere

Most of us spend a lot of time at work, which is why a pleasant working environment plays a major role in our overall quality of life.

Floors in workplaces are subjected to high levels of wear. Moland wooden floors are tough, and can easily tolerate the rigours of the workplace. Daily care and regular maintenance are simple and well described in our care instructions.

Moland's Wood care range contains all the products you need for regular care.

Remember to always care for your floor with products from Moland's Wood care range



Oak White Low Gloss Laquer



Oak Patina/Brushed Oil

Parquet floors

The traditional floor everyone tends to associate with a wooden floor! One board contains several long lamellas of varying length across the width of the board. Available for floating installation, and on joist.

Plank floors

Planks are full-width, one-strip boards. As a certain thickness of tree trunk is required for production of planks, they tend to be a little more expensive than parquet floors, for which there is much less waste.

Ship-deck floors

Marine floors originate from the old ships' decking, on which the gap between the planks was caulked with rope and tar. Their special appearance is now available for your floor, by combining a plank (or parquet) floor with a rubber joint in grey or black. The result emphasizes the lines of the room.

Engineered wood flooring

Our engineered wood floors are constructed in a 3-layer cross-ply construction. At the bottom is the back veneer, then the middle layer laid across and then the top layer. This construction is ideal for floors with underfloor heating.

Grades

Some of the Moland floors come in different grades of wood, either with lively contrasting colours or with a calmer, more even appearance. Datasheets are available on request for all our floors with full technical details on each.

Floor heating

Nearly all of Moland's 3-layer floors can be combined with floor heating (with the exception of beech). Guidelines for the most common floor heating systems are available on request. In special instances, simply contact our Technical Department.





Laying instructions

When you receive your Moland floor, laying instructions for that floor type will be enclosed. You are naturally also welcome to contact us if necessary. We will send you further instructions or answer any questions, if you hit problems, or are in doubt about how to proceed.

Wood care products

Moland's range of wood care products includes the products necessary for care and maintenance of your wooden floor. It can be kept attractive by relatively few and simple means, without a lot of effort. Our wood care range also includes products for furniture, ceilings and outdoors woods etc.

Accessories

Moland has everything you need to lay a floor: Glue, tapping blocks, pull bars, a range of underlay types and more.

We also stock a wide range of skirting boards in cherry, merbau, oak and ash, plus profiles.

Samples

To request samples of any of our floors to see if they suit the location you have in mind, call or mail us.

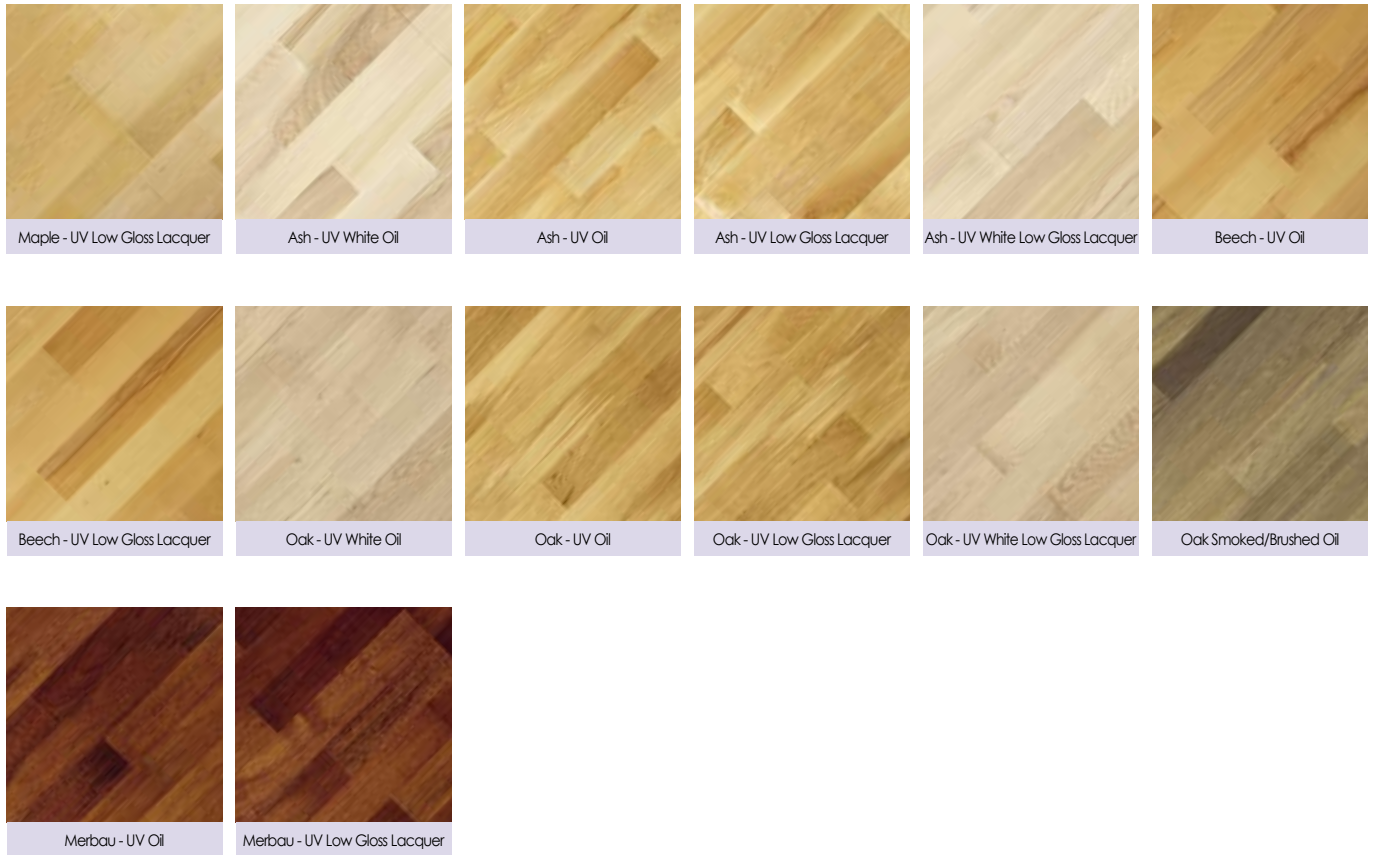
24 hour service

Go to www.moland-skive.dk for 24 hour access to information on our products, laying, care, prices and more. And this is where you can contact us if you have any questions not found on the website.

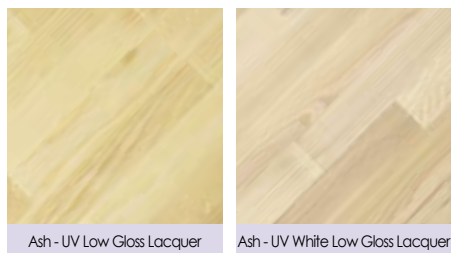
ing

Ash Low Gloss Laquer

Molaloc - Glueless 3-layer Parquet flooring for floating installation



Molaloc Select - Glueless 3-layer parquet flooring for loose laying



Molaloc Parquet - Flooring for loose laying



NB: Photos are only meant as a guide, because wood is a natural material, appearance can vary

Moland Parquet - 3-layer parquet for floating installation



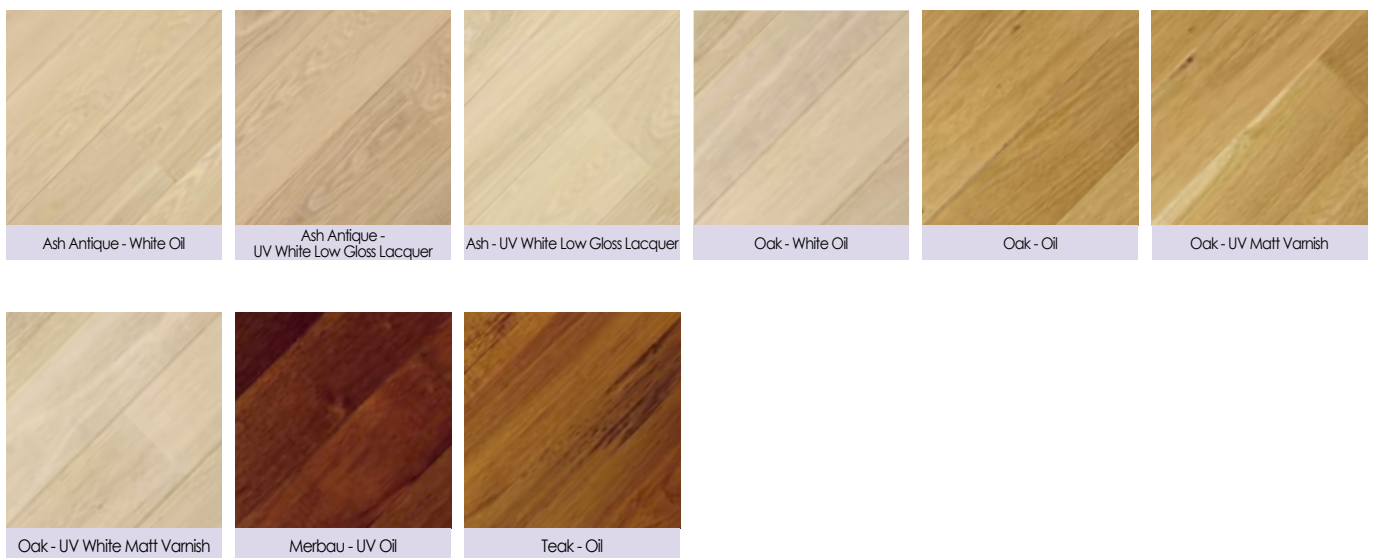
Molaloc Plank - Glueless plank flooring for floating installation



Molaloc Wide Plank - Glueless plank flooring for floating installation



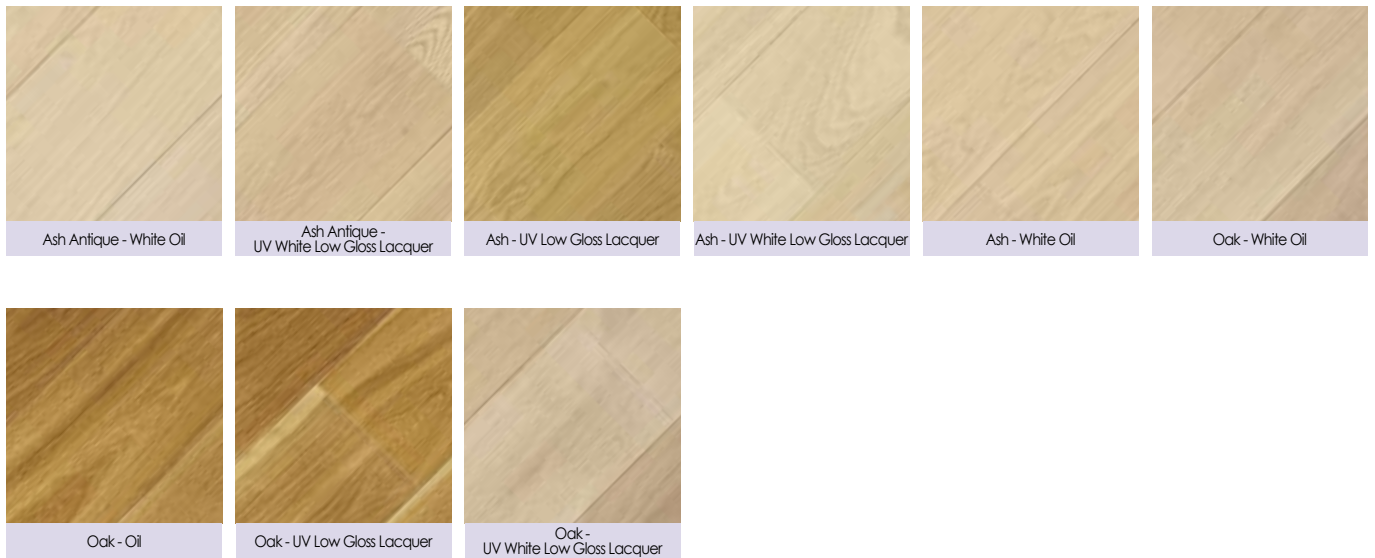
Moland Plank - 3-layer plank flooring for floating installation



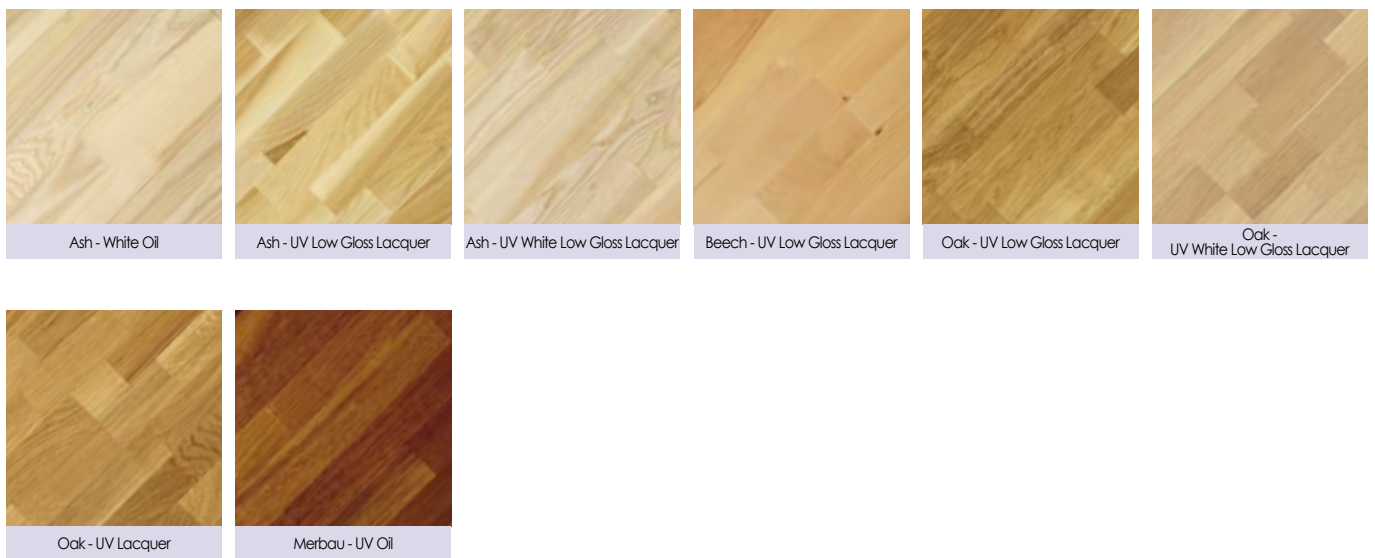
NB: Photos are only meant as a guide, because wood is a natural material, appearance can vary

Wood types

Molaloc Wide Plank - Laminated plank flooring for loose laying



Molaloc Parquet - Laminated parquet flooring for laying on laths

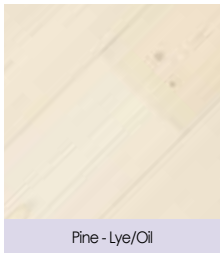


Molaloc Parquet - Laminated plank and Wide Plank flooring for laying on laths



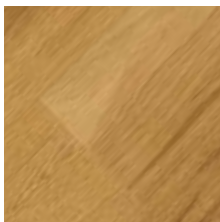
NB: Photos are only meant as a guide, because wood is a natural material, appearance can vary

Molaloc Pine Plank - Non-glue laminated plank flooring for loose laying

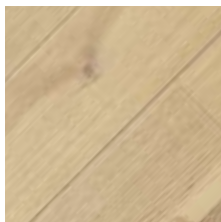


Pine - Lye/Oil

Molaloc Wide Plank - Laminated plank flooring for laying on laths

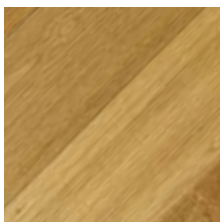


Oak - UV Matt Varnish

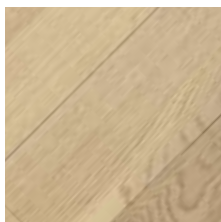


Oak - UV White Matt Varnish

Molaloc Plank Carat (Sandwich) - Laminated plank flooring for laying on laths

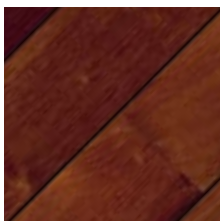


Oak - UV Matt Varnish

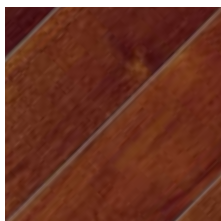


Oak - UV White Matt Varnish

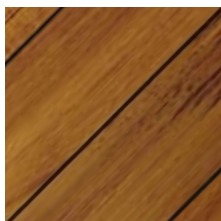
Moland Marine Floor - Examples shown with grey and black caulking



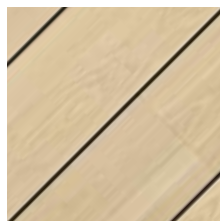
Merbau - Oil



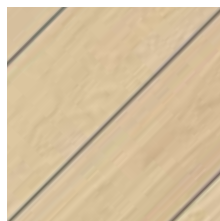
Merbau - Oil



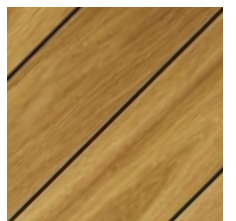
Teak - Oil



Ash - White Oil



Ash - White Oil



Oak - Oil

Accessories

Moland naturally has all the accessories necessary for laying your floor



Wood care

Remember to care for your floor with the Moland Wood care range





The Warehouse at Skive Harbour

Moland is a Danish-owned company that supplies dealers of building material with wood floors, wood care products, interior doors, glass wool insulation, plaster board products/steel and air-entrained concrete.

Our offices are located in Skive Harbour, HBC in Holbæk, Moland AB in Sweden (with headquarters and warehouse in Varberg), Moland as in Norway (with 10 warehouses distributed from Drammen in the south to Tromsø in the north), and Moland Slovakia s.r.o. are all sister companies of Moland.

Moland also do exports to a number of countries.

Quality and a wide range are significant parameters in an ever more competitive market. Moland is particularly well equipped in these areas. However, of perhaps even greater significance is the fact that the Moland brand is known for extremely short delivery times, a high level of service, reliability, flexibility and, not least, high spirits – we simply don't make things more complicated than necessary.

So inquire about Moland's products
– it's a natural choice.

moland
- a natural choice

moland byggevarer a/s

strandvejen 16 – dk-7800 skive
tlf. +45 96 14 50 00 – fax +45 96 14 50 99
e-mail: moland@moland-skive.dk – www.moland-skive.dk